

MONTHLY MEMBERSHIP PROGRESS REPORT

District 5M 6

Results as of: 12/31/2023

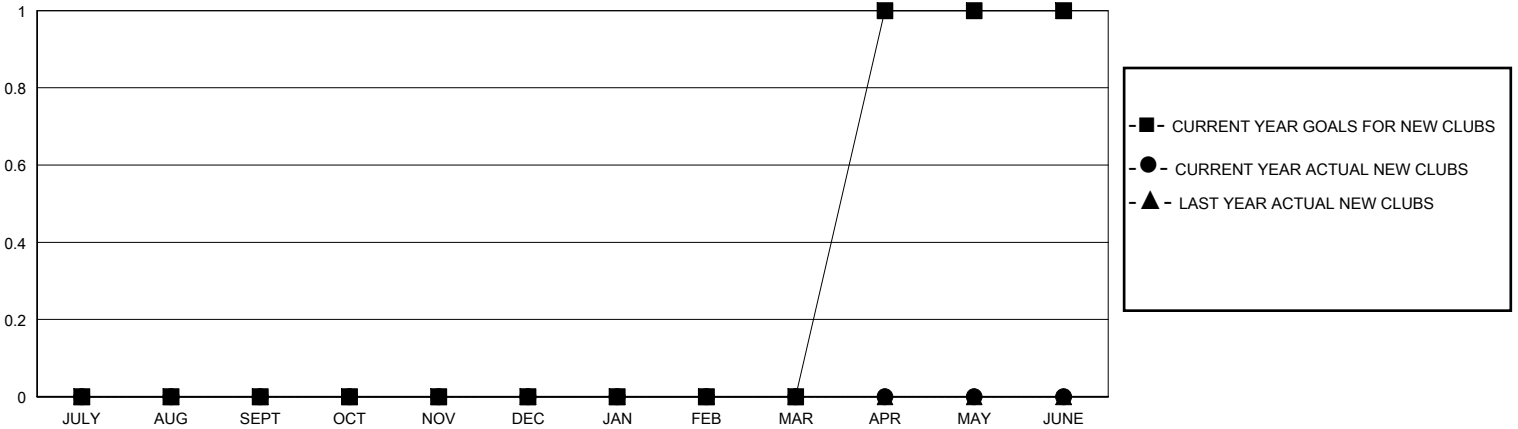
GMT:

LOCATION MINNESOTA

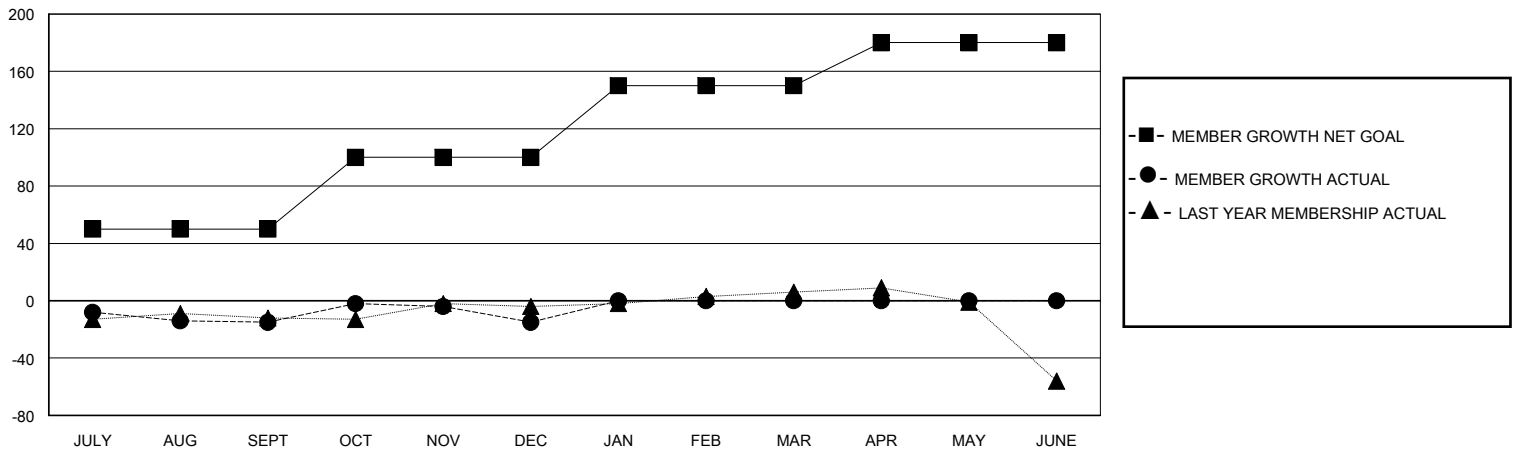
GMT CA

Clubs				Members			
RESULTS FOR 2023-2024				RESULTS FOR 2023-2024			
QUARTER	NEW CLUB GOAL	NEW CLUBS	DROPPED CLUBS	QUARTER	MEMBER GROWTH NET GOAL	MEMBER GROWTH ACTUAL	DROPPED MEMBERS ACTUAL (including transfers)
JULY/AUG/SEPT	0	0	1	JULY/AUG/SEPT	50	30	32
OCT/NOV/DEC	0	0	0	OCT/NOV/DEC	50	31	30
JAN/FEB/MAR	0	0	0	JAN/FEB/MAR	50	0	0
APR/MAY/JUNE	1	0	0	APR/MAY/JUNE	30	0	0

GOALS AND ACTUAL NEW CLUBS CUMULATIVE



GOALS AND ACTUAL MEMBERS CUMULATIVE



DROPPED CLUBS: 1	15 CLUBS OF 33 ADDED 1 OR MORE NEW MEMBERS	GENDER DISTRIBUTION MALE 752 (61.34%) FEMALE 473 (38.58%)
DROPPED MEMBERS DECEASED 5 CLUB CANCELLED 0 OTHER 57 TOTAL 62	CLICK HERE FOR CUMULATIVE MEMBERSHIP DATA	TOTAL FAMILY UNIT MEMBERS 297 FAMILY MEMBERS PAYING HALF DUES 150